

Kings Gardens

Hove





We know just the place...



With incredible breathtaking views, this two-bedroom top floor apartment, with a lift, offers what most would ever want of a home in Brighton and Hove. Amenities can be found on Church Road, and Hove station is within walking distance.

As you enter from the communal areas, the hallway allows access to all rooms. To the front of the building is the reception, with views directly over the seafront, as well as double doors leading to the private balcony, ideal for a morning coffee. The open plan kitchen has been thoughtfully designed and there is additional storage space if required.

Both bedrooms are to the rear of the building, with fitted storage and views towards the Sussex downs, whilst there is a modern and stylish family bathroom to service both rooms.

Kings Gardens is located on Hove seafront, moments from all the amenities you would want to visit. Hove station is within walking distance and offers a very popular route to London for anyone who may be commuting, making this an ideal home or Pied a Terre for anyone.



2



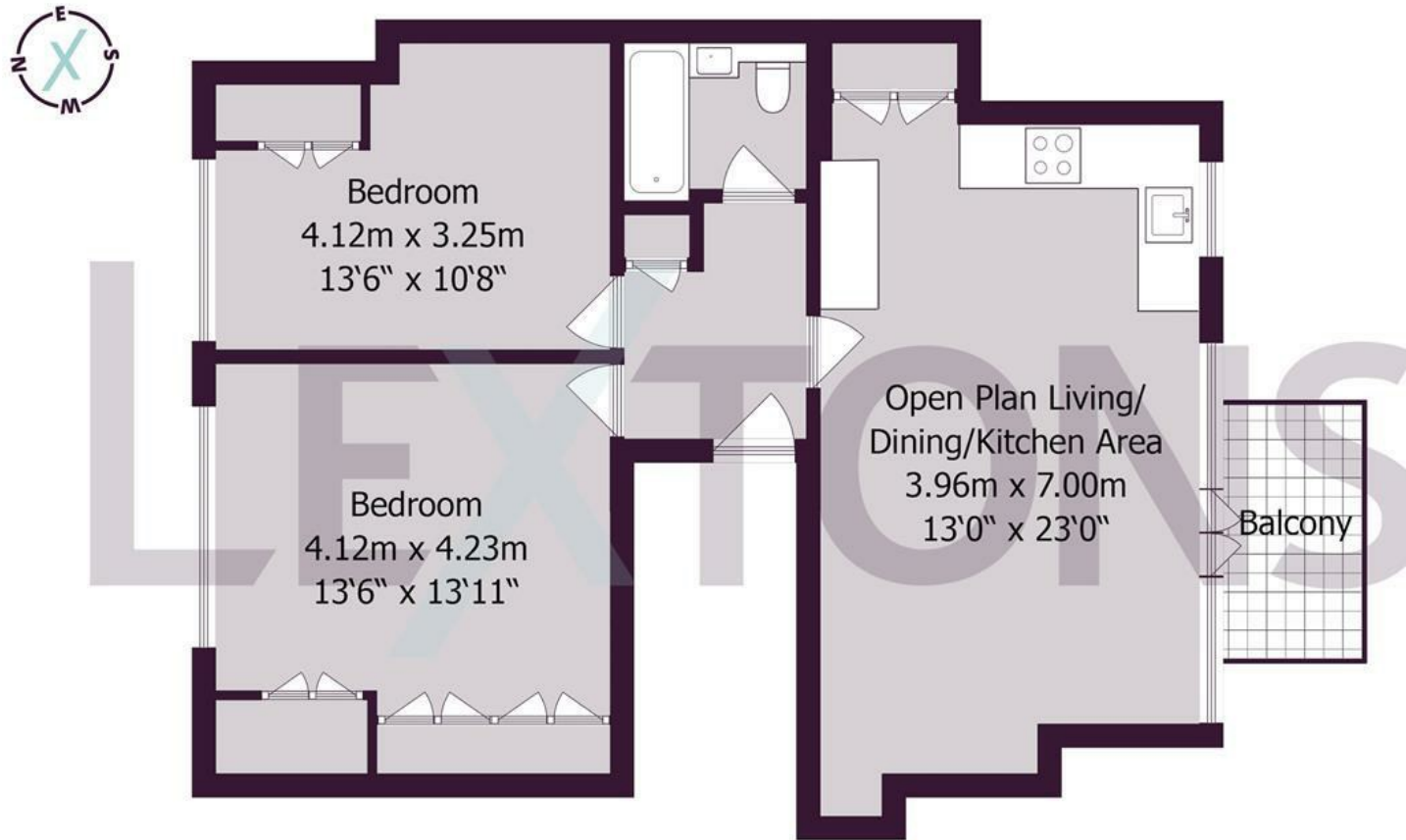
1



1



C



Approximate gross internal floor area 67.5 sq m/ 727 sq ft

Whilst every care has been taken to ensure accuracy, dimensions are approximate and for illustrative purposes only.

Created by Property Photography UK for Lextons. All rights reserved.

Meet us here...
174 Church Road
Hove
BN3 2DJ

We aim to make our particulars both accurate and reliable. However they are not guaranteed; nor do they form part of an offer or contract. If you require clarification on any points then please contact us, especially if you're traveling some distance to view. Please note that appliances and heating systems have not been tested and therefore no warranties can be given as to their good working order.